



GAT MONTHLY MEMBERSHIP PROGRESS REPORT

Results as of: 4/30/2023

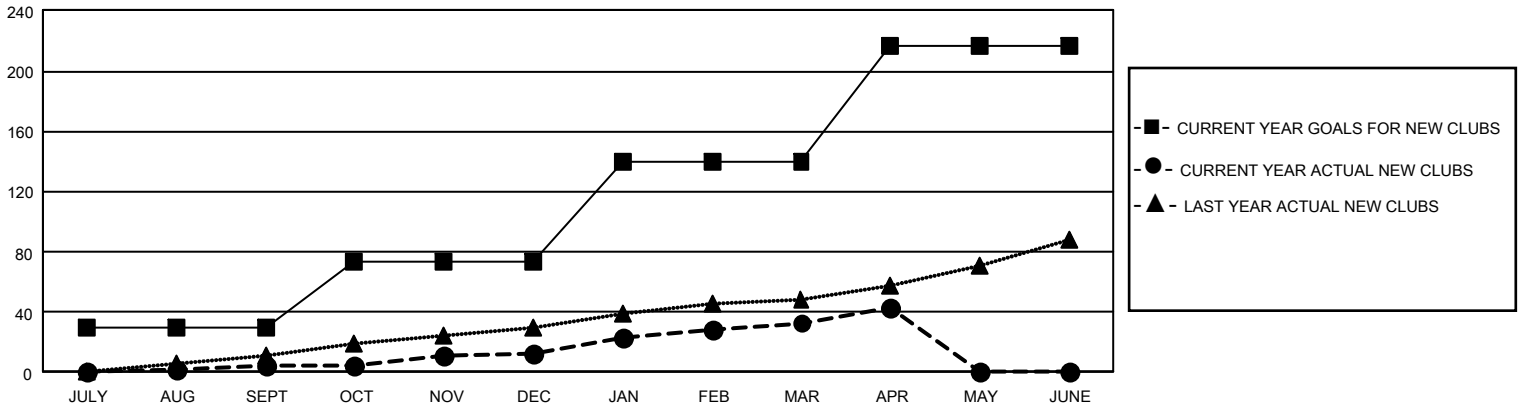
GAT Constitutional Area 4

REPORT DOES NOT INCLUDE CLUBS IN UNDISTRICTED AREAS.

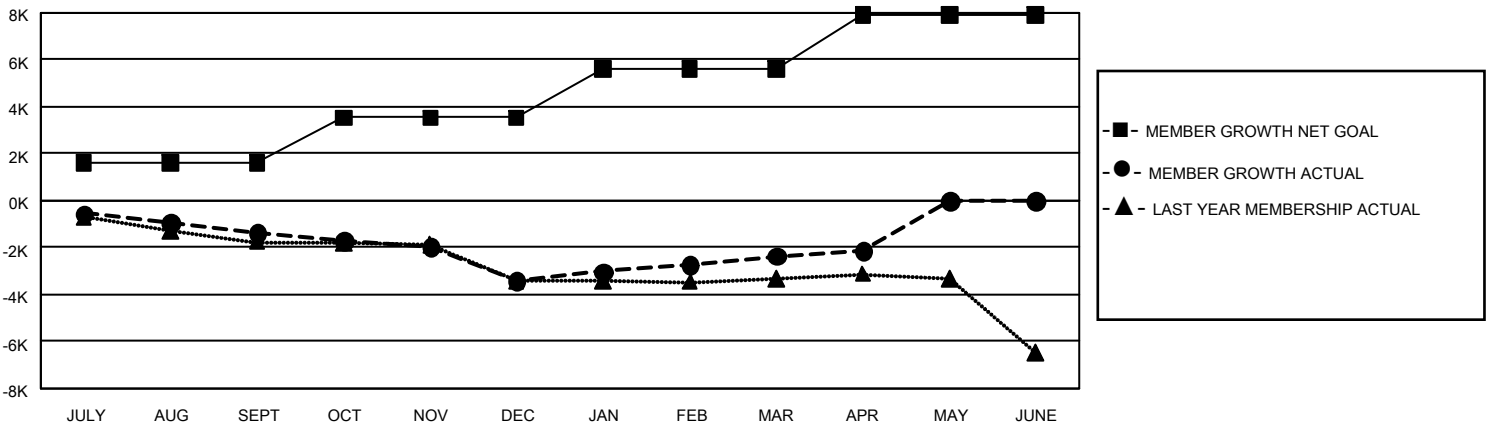
Clubs			
RESULTS FOR 2022-2023			
QUARTER	NEW CLUB GOAL	NEW CLUBS	DROPPED CLUBS
JULY/AUG/SEPT	90	4	80
OCT/NOV/DEC	129	9	47
JAN/FEB/MAR	201	20	37
APR/MAY/JUNE	228	10	4

Members			
RESULTS FOR 2022-2023			
QUARTER	MEMBER GROWTH NET GOAL	MEMBER GROWTH ACTUAL	DROPPED MEMBERS ACTUAL (including transfers)
JULY/AUG/SEPT	1596	2,665	3,615
OCT/NOV/DEC	1935	3,951	5,541
JAN/FEB/MAR	2081	5,220	3,630
APR/MAY/JUNE	2310	1,712	1,325

GOALS AND ACTUAL NEW CLUBS CUMULATIVE



GOALS AND ACTUAL MEMBERS CUMULATIVE



DROPPED CLUBS: 167	
DROPPED MEMBERS	
DECEASED	2,136
CLUB CANCELLED	690
OTHER	11,280
TOTAL	14,106

4,774 CLUBS OF 9,048 ADDED 1 OR MORE NEW MEMBERS

[CLICK HERE FOR CUMULATIVE MEMBERSHIP DATA](#)

GENDER DISTRIBUTION	
MALE	168,154 (74.98%)
FEMALE	56,086 (25.01%)
NON BINARY	1 (0.00%)
PREFER NOT TO ANSWER	30 (0.01%)
TOTAL FAMILY UNIT MEMBERS	11,166
FAMILY MEMBERS PAYING HALF DUES	5,765